



# **IBM Flex System EN4132 2- port 10Gb Ethernet Adapter**

## **User's Guide**





**IBM Flex System EN4132 2-  
port 10Gb Ethernet Adapter**

**User's Guide**

Note: Before using this information and the product it supports, read the general information in Appendix B, “Notices” on page 23, the Safety Information and Environmental Notices and User's Guide documents on the IBM Notices for Network Devices CD, and the Warranty Information document that comes with the product.

**First Edition February 2012**

**© Copyright IBM Corporation 2012.**

US Government Users Restricted Rights – Use, duplication or disclosure restricted by GSA ADP Schedule Contract with IBM Corp.

# Contents

<b>Safety</b> .....	<b>vii</b>
<b>Chapter 1. IBM Flex System EN4132 2-port 10Gb Ethernet adapter</b> .....	<b>1</b>
Related documentation .....	1
Notices and statements in this document .....	2
Features and specifications .....	3
Finding the MAC and serial number on the adapter .....	4
<b>Chapter 2. Installing the IBM Flex System adapter</b> .....	<b>5</b>
Installing device drivers and verification .....	8
<b>Chapter 3. Solving problems</b> .....	<b>17</b>
Parts listing .....	17
<b>Appendix A. Getting help and technical assistance</b> .....	<b>19</b>
Before you call .....	19
Using the documentation .....	20
Getting help and information from the World Wide Web .....	20
Software service and support .....	20
Hardware service and support .....	21
IBM Taiwan product service .....	21
<b>Appendix B. Notices</b> .....	<b>23</b>
Trademarks .....	24
Important notes .....	25
Document format .....	25
Electronic emission notices .....	26



---

# Safety

Before installing this product, read the Safety Information.

قبل تركيب هذا المنتج، يجب قراءة الملاحظات الأمنية

Antes de instalar este produto, leia as Informações de Segurança.

在安装本产品之前，请仔细阅读 **Safety Information**  
(安全信息)。

安裝本產品之前，請先閱讀「安全資訊」。

Prije instalacije ovog produkta obavezno pročitajte Sigurnosne Upute.

Před instalací tohoto produktu si přečtěte příručku bezpečnostních instrukcí.

Læs sikkerhedsforskrifterne, før du installerer dette produkt.

Lees voordat u dit product installeert eerst de veiligheidsvoorschriften.

Ennen kuin asennat tämän tuotteen, lue turvaohjeet kohdasta Safety Information.

Avant d'installer ce produit, lisez les consignes de sécurité.

Vor der Installation dieses Produkts die Sicherheitshinweise lesen.

Πριν εγκαταστήσετε το προϊόν αυτό, διαβάστε τις πληροφορίες ασφάλειας  
(safety information).

לפני שתתקינו מוצר זה, קראו את הוראות הבטיחות.

A termék telepítése előtt olvassa el a Biztonsági előírásokat!

Prima di installare questo prodotto, leggere le Informazioni sulla Sicurezza.

製品の設置の前に、安全情報をお読みください。

본 제품을 설치하기 전에 안전 정보를 읽으십시오.

Пред да се инсталира овој продукт, прочитајте информацијата за безбедност.

Les sikkerhetsinformasjonen (Safety Information) før du installerer dette produktet.

Przed zainstalowaniem tego produktu, należy zapoznać się  
z książką "Informacje dotyczące bezpieczeństwa" (Safety Information).

Antes de instalar este produto, leia as Informações sobre Segurança.

Перед установкой продукта прочтите инструкции по  
технике безопасности.

Pred inštaláciou tohto zariadenia si pečítajte Bezpečnostné predpisy.

Pred namestitvijo tega proizvoda preberite Varnostne informacije.

Antes de instalar este producto, lea la información de seguridad.

Läs säkerhetsinformationen innan du installerar den här produkten.

**Important:**

Each caution and danger statement in this document is labeled with a number. This number is used to cross reference an English-language caution or danger statement with translated versions of the caution or danger statement in the *Safety Information* document.

For example, if a caution statement is labeled "Statement 1," translations for that caution statement are in the *Safety Information* document under "Statement 1."

Be sure to read all caution and danger statements in this document before you perform the procedures. Read any additional safety information that comes with the server or optional device before you install the device.

This device is intended for use with UL Listed IBM devices.

**Statement 1:**



**DANGER**

**Electrical current from power, telephone, and communication cables is hazardous.**

**To avoid a shock hazard:**

- **Do not connect or disconnect any cables or perform installation, maintenance, or reconfiguration of this product during an electrical storm.**
- **Connect all power cords to a properly wired and grounded electrical outlet.**
- **Connect to properly wired outlets any equipment that will be attached to this product.**
- **When possible, use one hand only to connect or disconnect signal cables.**
- **Never turn on any equipment when there is evidence of fire, water, or structural damage.**
- **Disconnect the attached power cords, telecommunications systems, networks, and modems before you open the device covers, unless instructed otherwise in the installation and configuration procedures.**
- **Connect and disconnect cables as described in the following table when installing, moving, or opening covers on this product or attached devices.**

**To Connect:**

1. Turn everything OFF.
2. First, attach all cables to devices.
3. Attach signal cables to connectors.
4. Attach power cords to outlet.
5. Turn device ON.

**To Disconnect:**

1. Turn everything OFF.
2. First, remove power cords from outlet.
3. Remove signal cables from connectors.
4. Remove all cables from devices.





---

# Chapter 1. IBM Flex System EN4132 2-port 10Gb Ethernet adapter

The IBM Flex System EN4132 2-port 10Gb Ethernet adapter provides the highest performing and most flexible interconnect solution for servers used in Enterprise Data Centers, High-Performance Computing, and Embedded environments.

This User's Guide contains setup and installation instructions for the IBM Flex System EN4132 2-port 10Gb Ethernet adapter and general information about the adapter, including how to install drivers and how to get help.

For information about the types of compatible devices available for IBM products, contact your IBM marketing representative or authorized reseller. For a list of supported optional devices, see

<http://www.ibm.com/servers/eserver/serverproven/compat/us/>.

The warranty document for this product comes with the network device, and it contains information about the terms of the warranty.

For the most up-to-date product documentation for all of your IBM Flex System products, go to the IBM Flex System Information Center at

<http://publib.boulder.ibm.com/infocenter/flexsys/information/index.jsp>.

---

## Related documentation

This User's Guide contains setup and installation instructions for the IBM Flex System adapter and general information about the adapter and how to get help. The most recent version of this User's Guide and all other related documents are at <http://publib.boulder.ibm.com/infocenter/flexsys/information/index.jsp>.

In addition to this User's Guide, the following related documentation is available for your adapter:

- *IBM Flex System Installation and Service Guide*  
The Installation and Service Guide that comes with the IBM compute node contains the instructions for installing the adapter in the compute node.
- *Mellanox OFED for Linux User Manual*
- This document is available at [www.mellanox.com](http://www.mellanox.com), and it provides information about the Mellanox OFED software. Mellanox OFED is a single Virtual Protocol Interconnect (VPI) software stack that is based on the OpenFabrics (OFED) Linux stack.
- *MLNX\_VPI for Windows User Manual*  
This README document is available at [www.mellanox.com](http://www.mellanox.com), and it provides information about the Mellanox WinOF VPI driver Rev 2.1.3 package, which is distributed for Windows Server 2008 (x86 and x64), Windows Server R2 (x64), and Windows 7 (x86 and x64).
- *MLNX\_VPI for Windows Installation Guide*  
This document is available at [www.mellanox.com](http://www.mellanox.com), and it provides information about installing and testing MLNX\_VPI for Windows on a single host machine that has an IBM IB6132 FDR InfiniBand adapter installed.

IBM Flex System Notices for Network Devices CD that comes with the adapter contains the following documentation in portable document format (PDF):

- *IBM Flex System Network Devices Basic Troubleshooting Information*  
This multilingual document contains basic troubleshooting information and a replacement parts list for the switches, adapters, and pass-thru modules. The product documentation that comes with your IBM chassis, compute node, or network device might contain more detailed troubleshooting information.
- *IBM Safety Information*  
This multilingual document contains the translated versions of the safety messages that appear in the IBM documentation.
- *IBM Environmental Notices and User's Guide*  
This multilingual document contains the world wide environmental and recycling information for your product.
- *IBM License Agreement for Machine Code*  
This multilingual document contains the IBM license information for the machine code for your product.
- *IBM Warranty Information*  
This multilingual document is provided on the CD and in printed format. It contains the IBM warranty information for your product.

For the most up-to-date documentation for all of the IBM Flex System products, go to the IBM Flex System Information Center at <http://publib.boulder.ibm.com/infocenter/flexsys/information/index.jsp>.

---

## Notices and statements in this document

The caution and danger statements in this document are also in the multilingual *Safety Information* document, which is provided on the *IBM Notices for Network Device* CD. Each statement is numbered for reference to the corresponding statement in your language in the *Safety Information* document.

The following notices and statements are used in this document:

- **Note:** These notices provide important tips, guidance, or advice.
- **Important:** These notices provide information or advice that might help you avoid inconvenient or problem situations.
- **Attention:** These notices indicate potential damage to programs, devices, or data. An attention notice is placed just before the instruction or situation in which damage could occur.
- **Caution:** These statements indicate situations that can be potentially hazardous to you. A caution statement is placed just before the description of a potentially hazardous procedure step or situation.
- **Danger:** These statements indicate situations that can be potentially lethal or extremely hazardous to you. A danger statement is placed just before the description of a potentially lethal or extremely hazardous procedure step or situation.

## Features and specifications

The IBM Flex System EN4132 2-port 10Gb Ethernet adapter has the following features and specifications:

- PCI Express 3.0 (1.1 and 2.0 compatible) through an x8 edge connector up to 8GT/s
- 10 Gb/s Ethernet
- CPU off-load of transport operations
- CORE-Direct® application off-load
- GPUDirect application off-load
- RDMA over Converged Ethernet (RoCE)
- End-to-end QoS and congestion control
- Hardware-based I/O virtualization
- TCP/UDP/IP stateless off-load
- Ethernet encapsulation (EoIB)
- RoHS-6 compliant

**Table 1 - IBM Flex System EN4132 2-port 10Gb Ethernet adapter specifications table**

<b>Physical</b>	<b>Size:</b> 3.3in. x 3.8 in. (84.89mm x 96.7 mm)
<b>Protocol Support</b>	<b>Ethernet:</b> 10GBASE-CX4, 10GBASE-R, and 1000BASE-R
	<b>Data Rate:</b> 1/10Gb/s – Ethernet
	<b>PCI Express Gen3:</b> SERDES @ 8.0GT/s, 8 lanes (2.0 and 1.1 compatible)
<b>Regulatory</b>	<b>EMC:</b> Refer to the following link: <a href="http://www.mellanox.com/related-docs/user_manuals/Regulatory_and_Compliance_Guide.pdf">www.mellanox.com/related-docs/user_manuals/Regulatory_and_Compliance_Guide.pdf</a>
	<b>Safety:</b> IEC/EN 60950-1:2006 ETSI EN 300 019-2-2 IEC 60068-2- 64, 29, 32
	<b>RoHS:</b> RoHS-R6

---

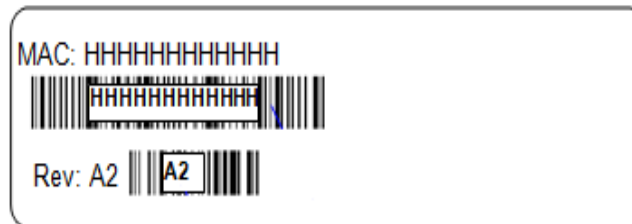
## Finding the MAC and serial number on the adapter

Each adapter has a label on the print side that shows the adapter serial number and the MAC for the Ethernet protocol.

**Figure 1: Board Label 1**



**Figure 2: Board Label 2**



---

## Chapter 2. Installing the IBM Flex System adapter

This chapter provides information and instructions for installing the adapter. See the documentation that came with the IBM Flex System compute node for the instructions needed to install the adapter in the node; then, return to this User's Guide for the information and instructions needed to complete the installation.

Installation of this adapter should only be done by a properly qualified technician or engineer. Read and follow all safety precautions specified in this document.

Use the documentation supplied with the IBM Flex System chassis to remove and replace the compute node from the chassis.

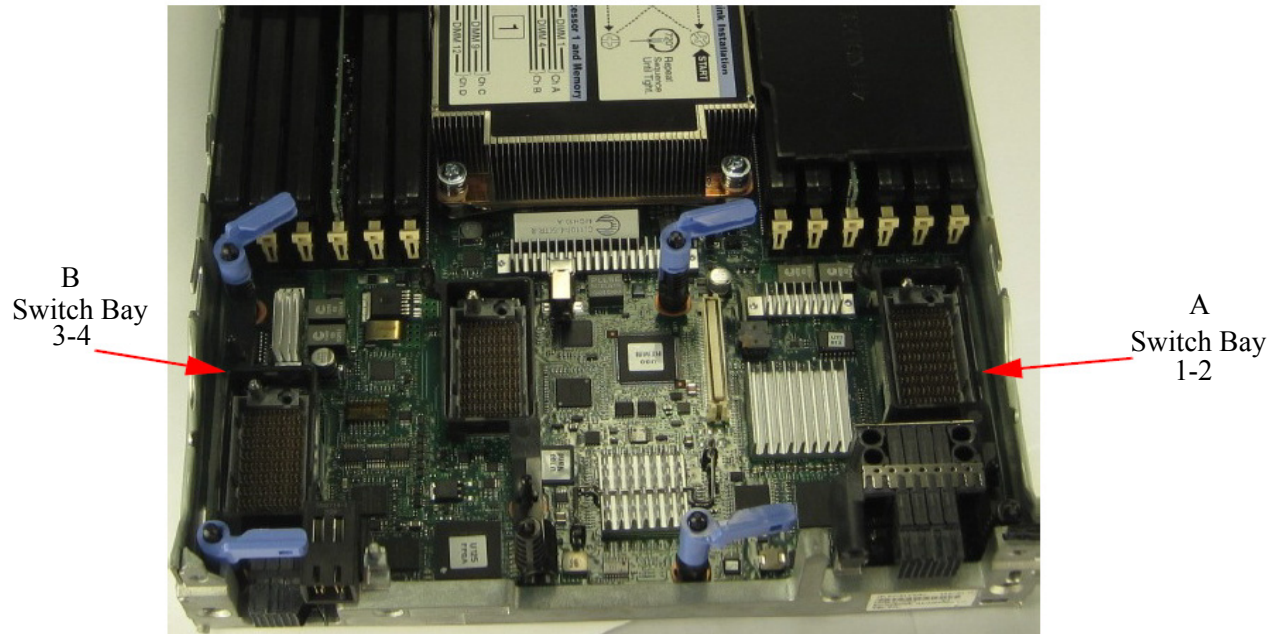
1. Remove the cover from the compute node
  - a. With the compute node sitting on the work table slide the release button, located on the right-side of the compute node, forward while pressing it down as well. This action releases the cover of the compute node.
  - b. Lift the cover from the compute node.

**Figure 3: Lift Off Cover**



2. The adapter can be placed in either of the two available slots.

Figure 4: Compute Node



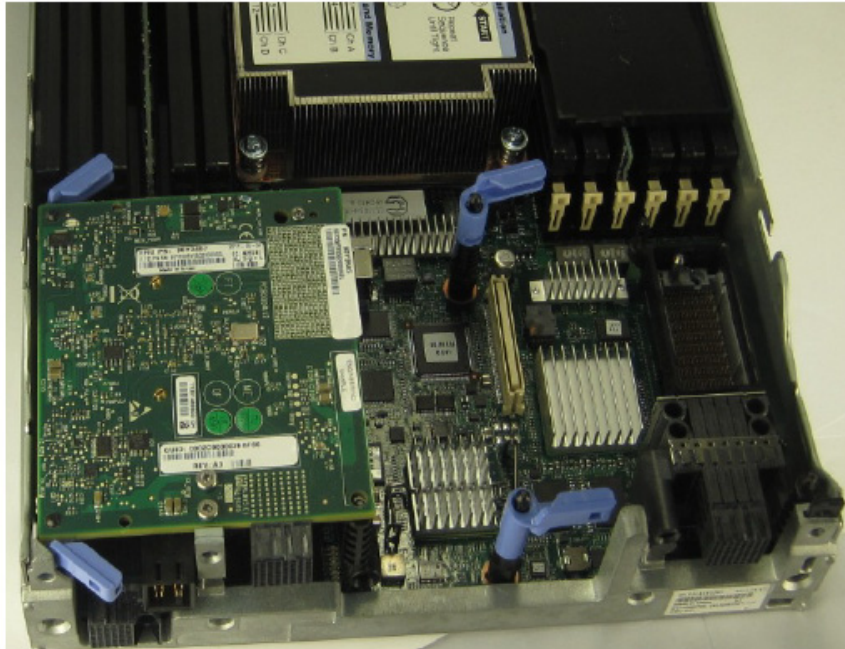
3. Line up the adapter so that the pins of the adapter are over the sockets in the compute node.

Figure 5: IBM Flex System Adapter



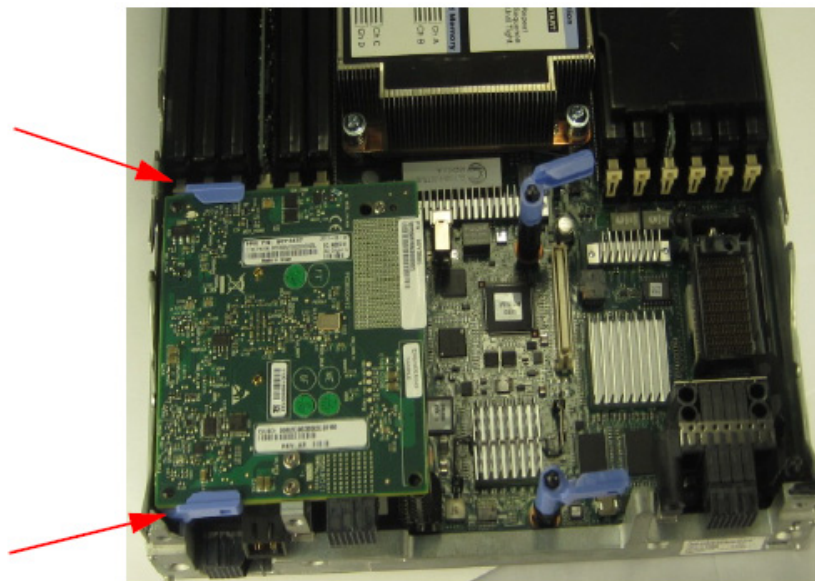
4. Plug the adapter into the socket print-side up.

**Figure 6: Plug the Adapter**



5. Close the retaining clips.

**Figure 7: Retaining Clips**



6. Replace the compute node cover.



---

## Installing device drivers and verification

The following provides brief device driver installation instructions. For more on device driver installation instructions, refer to the following operating system-specific documentation:

[www.mellanox.com](http://www.mellanox.com) => Products => Software/Drivers => InfiniBand and VPI SW/Drivers => Linux SW/Drivers => MLNX\_OFED

AIX Version 7.1 with the 7100-01 Technology Level Service Pack 3

- AIX device driver software - this adapter device driver is included in the following AIX releases or later levels. Refer to the installation instructions for the specific AIX release to install or update driver software.

[www.mellanox.com](http://www.mellanox.com) => Products => Software/Drivers => InfiniBand and VPI SW/Drivers => Windows SW/Drivers => MLNX\_WinOF VPI

[www.mellanox.com](http://www.mellanox.com) => Products => Software/Drivers => InfiniBand and VPI SW/Drivers => VMware Drivers

### Linux drivers

For Linux, download and install the latest OpenFabrics Enterprise Distribution (OFED) software package available via the Mellanox web site at: <http://www.mellanox.com> => Products => Software/Drivers => InfiniBand & VPI Software/Drivers => Mellanox OFED => Download. Follow the installation instructions included in the download package (also available from the download page). To ensure that communication has been established follow the instructions below.

#### Get the device location

Get the device location on the PCI bus by running `lspci` and locating lines with the string "Mellanox Technologies":

```
> lspci |grep -i Mellanox  
  
07:00.0 Network controller: Mellanox Technologies MT27500 Family [ConnectX-3]
```

#### Check the OFED version

To get the version of the running Mellanox OFED/BXOFED, run the following command:

```
> # ofed_info |head -1  
  
MLNX_OFED_LINUX-1.5.3-2.1.0 (OFED-1.5.3-2.1.0)
```

#### Load the Ethernet Driver

By default, the Mellanox OFED stack loads `mlx4_en`. Run `lsmod` to verify that the module is listed.

```
> Host# lsmod |grep mlx4_en

mlx4_en                96382  0
mlx4_core              1184104  2 mlx4_en
```

If you don't see the `mlx4_en` driver, run: `' modprobe mlx4_en'`

Another option is to use the command below to see which modules are active.

Example:

```
Edit "/etc/infiniband/openib.conf" which modules needs to load
from a service.

Load MLX4_EN module

MLX4_EN_LOAD=yes
```

The "Usage: `openibd {start|stop|restart|status}`" command to modify this file and thereby control the drivers.

**Check the network interface name:**

run: `ifconfig -a`

```
> ifconfig -a

eth0      Link encap:Ethernet  HWaddr 5C:F3:FC:5F:40:EA
inet addr:10.7.5.170  Bcast:10.7.7.255  Mask:255.255.252.0
inet6 addr: fe80::5ef3:fcff:fe5f:40ea/64 Scope:Link
UP BROADCAST RUNNING MULTICAST  MTU:1500  Metric:1
RX packets:20009 errors:0 dropped:0 overruns:0 frame:0
TX packets:4492 errors:0 dropped:0 overruns:0 carrier:0
collisions:0 txqueuelen:1000
RX bytes:7005902 (6.6 MiB)  TX bytes:399581 (390.2 KiB)
```

run: `ethtool <interface>`

```
> Host# ethtool eth0

Settings for eth0:

Supported ports: [ TP ]

Supported link modes:   1000baseT/Full
                        10000baseT/Full

Supports auto-negotiation: Yes

Advertised link modes:  1000baseT/Full
                        10000baseT/Full

Advertised auto-negotiation: N

Speed: 1000Mb/s
```

```
Duplex: Full
Port: Twisted Pair
PHYAD: 0
Transceiver: internal
Auto-negotiation: on
Supports Wake-on: g
Wake-on: d
Link detected: yes
```

## Ethernet Driver Usage and Configuration

To check driver and device information run:

```
> ethtool -i eth<x>
```

Example:

```
> ethtool -i eth0
driver:mlx4_en (MT_1020110019_CX-3)
version: 1.5.6.33 (Oct 2011)
firmware-version:2.10.0000
bus-info: 0000:07:00.0
```

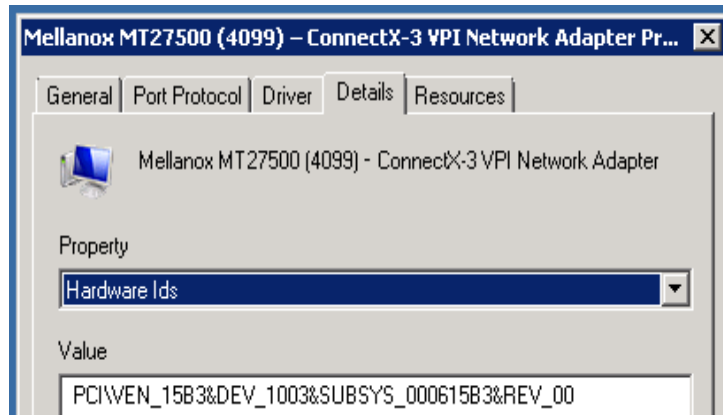
## Windows drivers

For Windows, download and install the latest Mellanox WinOF VPI for Windows software package available via the Mellanox web site at: <http://www.mellanox.com> => Products => Software/Drivers => InfiniBand & VPI Software/Drivers => Mellanox WinOF VPI => Download. Follow the installation instructions included in the download package (also available from the download page). To ensure that communication has been established follow the instructions below.

Get the device location on the PCI bus by performing the following steps:

1. Open Device Manager on the server. Click start=> Run, and then enter "devmgmt.msc"
2. Expand System Devices and locate the adapter
3. Right click and select Properties to display the adapter properties window
4. Click the Details tab and select Device Instance Id (Windows 2003) or Hardware Ids (Windows 2008/R2) from the Property pull-down menu

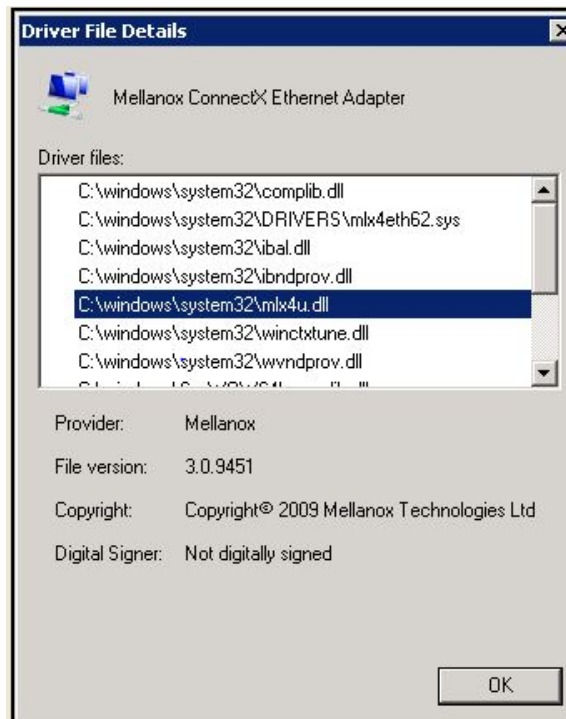
Figure 8: PCI Device (Example)



5. In the Value display box, check the fields VEN and DEV (fields are separated by '&'). In the display example above, notice the sub-string "PCI\VEN\_15B3&DEV\_1003": VEN is equal to 0x15B3 – this is the Vendor ID of Mellanox Technologies; and DEV is equal to 1003 – this is a valid Mellanox Technologies PCI Device ID.

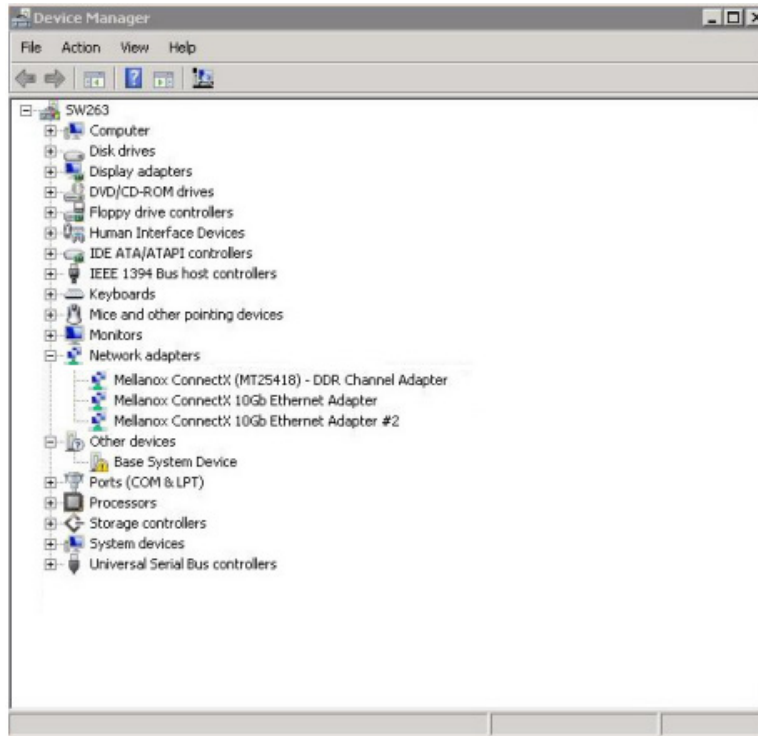
#### Verify MLX driver

1. Start the "Device Manager" (open a command line window and enter: devmgmt.msc)
2. Open "Network Adapters"
3. Right click the relevant adapter and select Properties
4. Click the Driver tab (example)



To display a summary of network adapter software- and hardware-related information such as driver version, firmware version, bus interface, adapter identity, and network port link information, perform the following steps:

1. Display the Device Manager

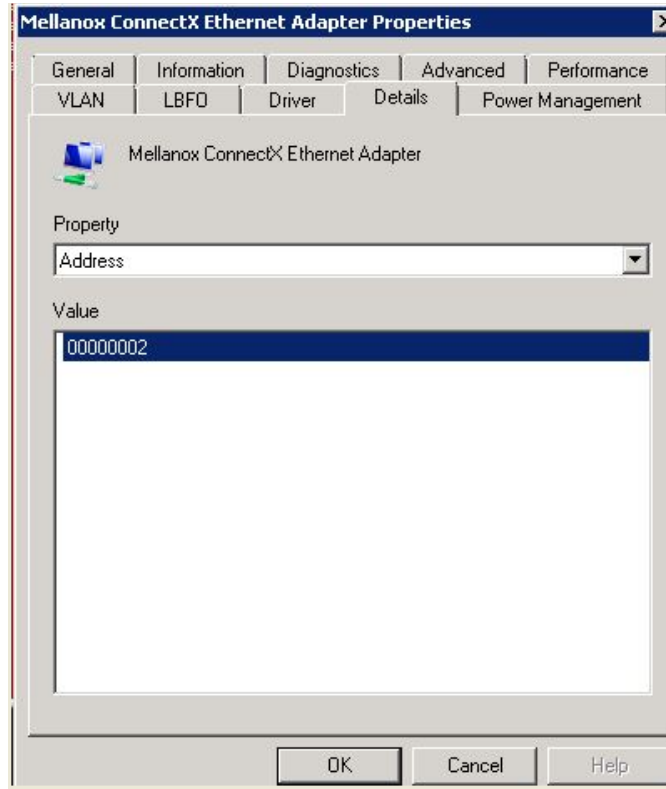


2. Right-click the relevant adapter and left-click Properties
3. Select the Information tab from the Properties sheet (example)



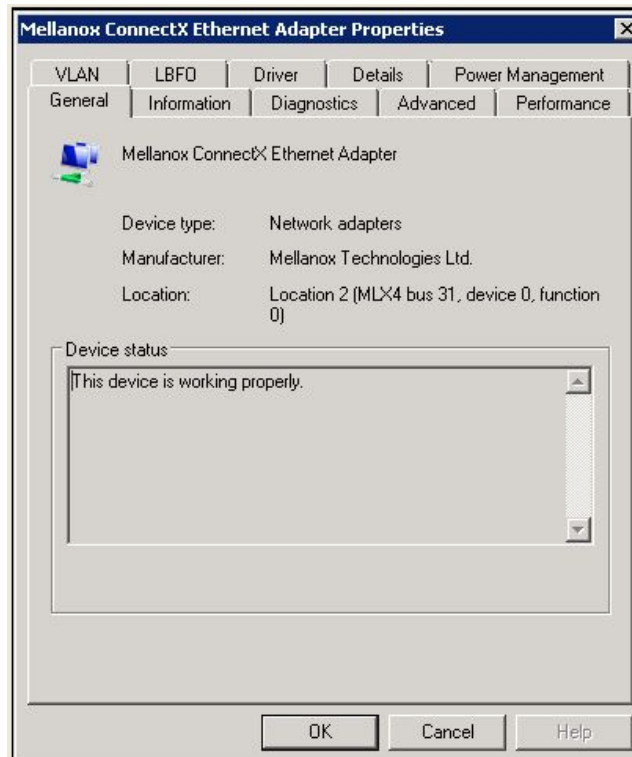
### Obtain the Ethernet address

1. Display the “Device Manager”
2. Right-click the relevant adapter and left-click Properties
3. Select the Details tab from the Properties sheet
4. Select Address from the Property pull-down menu (example)



## Driver and device information

To check driver and device information click on the General tab (example)



## VMware driver

For VMware download and install the latest Mellanox WinOF VPI for Windows software package available via the Mellanox web site at: <http://www.mellanox.com> => Products => Software/Drivers => InfiniBand & VPI Software/Drivers => InfiniBand OFED Driver for VMware® ESX Server => Download. Follow the installation instructions included in the download package (also available from the download page).

## RDMA over Converged Ethernet

ConnectX®-3 connected to an Ethernet fabric provides all of the basic NIC functionality plus RDMA over Converged Ethernet (RoCE). RoCE utilizes advances in Data Center Bridging (DCB) to enable efficient and low cost implementations of RDMA over Ethernet, supporting the entire breadth of RDMA and low latency features. This includes reliable connected service, datagram service, RDMA and send/receive semantics, atomic operations, user level multicast, user level I/O access, kernel bypass, and zero copy. This capability is enabled when using the Mellanox OFED or WinOF VPI drivers.

ConnectX®-3 EN with RoCE based network management is the same as that for any Ethernet and DCB-based network management, eliminating the need for IT managers to learn new technologies.

#### Hardware and Software Requirements

##### Software:

- Mellanox OFED or WinOF VPI

##### Hardware:

- IBM Flex System adapter





---

## Chapter 3. Solving problems

If you cannot locate and correct a problem by using the information in this section, see Appendix A, “Getting help and technical assistance,” on page 19.

---

### Parts listing

Replaceable components are of three types:

- **Tier 1 customer replaceable unit (CRU):** Replacement of Tier 1 CRUs is your responsibility. If IBM installs a Tier 1 CRU at your request, you will be charged for the installation.
- **Tier 2 customer replaceable unit (CRU):** You may install a Tier 2 CRU yourself or request IBM to install it, at no additional charge, under the type of warranty service that is designated for your server.
- **Field replaceable unit (FRU):** FRUs must be installed only by trained service technicians.

For information about the terms of the warranty, see the *Warranty Information* document.

The replaceable components in the following table are Tier 1 CRUs. If other components require replacement, see the documentation that came with those devices for instructions.

**Table 2 - Part CRU Number**

Part	CRU number (Tier 1)
IBM Flex System EN4132 2-port 10Gb Ethernet Adapter	90Y3469



---

## Appendix A. Getting help and technical assistance

If you need help, service, or technical assistance or just want more information about IBM products, you will find a wide variety of sources available from IBM to assist you. This section contains information about where to go for additional information about IBM and IBM products, what to do if you experience a problem with your system, and whom to call for service, if it is necessary.

---

### Before you call

Before you call, make sure that you have taken these steps to try to solve the problem yourself:

- Check all cables to make sure that they are connected.
- Check the power switches to make sure that the system and any optional devices are turned on.
- Use the troubleshooting information in your system documentation, and use the diagnostic tools that come with your system.
- Go to the IBM support website at <http://www.ibm.com/supportportal/> to check for technical information, hints, tips, and new device drivers or to submit a request for information.

You can solve many problems without outside assistance by following the troubleshooting procedures that IBM provides in the online help or in the documentation that is provided with your IBM product. The documentation that comes with IBM systems also describes the diagnostic tests that you can perform. Most systems, operating systems, and programs come with documentation that contains troubleshooting procedures and explanations of error messages and error codes. If you suspect a software problem, see the documentation for the operating system or program.

---

## Using the documentation

Information about your IBM system and preinstalled software, if any, or optional device is available in the documentation that comes with the product. That documentation can include printed documents, online documents, readme files, and help files. See the troubleshooting information in your system documentation for instructions for using the diagnostic programs. The troubleshooting information or the diagnostic programs might tell you that you need additional or updated device drivers or other software. IBM maintains pages on the World Wide Web where you can get the latest technical information and download device drivers and updates. To access these pages, go to <http://www.ibm.com/supportportal/> and follow the instructions.

---

## Getting help and information from the World Wide Web

On the World Wide Web, the IBM website has up-to-date information about IBM systems, optional devices, services, and support. You can find service information for IBM systems and optional devices at <http://www.ibm.com/supportportal/>.

---

## Software service and support

Through IBM Support Line, you can get telephone assistance, for a fee, with usage, configuration, and software problems. For information about which products are supported by Support Line in your country or region, see <http://www.ibm.com/services/supline/products/>.

For more information about Support Line and other IBM services, see <http://www.ibm.com/services/>, or see <http://www.ibm.com/planetwide/> for support telephone numbers. In the U.S. and Canada, call 1-800-IBM-SERV (1-800-426-7378).

---

## Hardware service and support

You can receive hardware service through your IBM reseller or IBM Services. To locate a reseller authorized by IBM to provide warranty service, go to <http://www.ibm.com/partnerworld/> and click **Find Business Partners** on the right side of the page. For IBM support telephone numbers, see <http://www.ibm.com/planetwide/>. In the U.S. and Canada, call 1-800-IBM-SERV (1-800-426-7378).

In the U.S. and Canada, hardware service and support is available 24 hours a day, 7 days a week. In the U.K., these services are available Monday through Friday, from 9 a.m. to 6 p.m.

---

## IBM Taiwan product service

台灣 IBM 產品服務聯絡方式：  
台灣國際商業機器股份有限公司  
台北市松仁路 7 號 3 樓  
電話：0800-016-888

IBM Taiwan product service contact information:  
IBM Taiwan Corporation  
3F, No 7, Song Ren Rd.  
Taipei, Taiwan  
Telephone: 0800-016-888



---

## Appendix B. Notices

This information was developed for products and services offered in the U.S.A.

IBM may not offer the products, services, or features discussed in this document in other countries. Consult your local IBM representative for information on the products and services currently available in your area. Any reference to an IBM product, program, or service is not intended to state or imply that only that IBM product, program, or service may be used. Any functionally equivalent product, program, or service that does not infringe any IBM intellectual property right may be used instead. However, it is the user's responsibility to evaluate and verify the operation of any non-IBM product, program, or service.

IBM may have patents or pending patent applications covering subject matter described in this document. The furnishing of this document does not give you any license to these patents. You can send license inquiries, in writing, to:

*IBM Director of Licensing  
IBM Corporation  
North Castle Drive  
Armonk, NY 10504-1785  
U.S.A.*

INTERNATIONAL BUSINESS MACHINES CORPORATION PROVIDES THIS PUBLICATION "AS IS" WITHOUT WARRANTY OF ANY KIND, EITHER EXPRESS OR IMPLIED, INCLUDING, BUT NOT LIMITED TO, THE IMPLIED WARRANTIES OF NON-INFRINGEMENT, MERCHANTABILITY OR FITNESS FOR A PARTICULAR PURPOSE. Some states do not allow disclaimer of express or implied warranties in certain transactions, therefore, this statement may not apply to you.

This information could include technical inaccuracies or typographical errors. Changes are periodically made to the information herein; these changes will be incorporated in new editions of the publication. IBM may make improvements and/or changes in the product(s) and/or the program(s) described in this publication at any time without notice.

Any references in this information to non-IBM websites are provided for convenience only and do not in any manner serve as an endorsement of those websites. The materials at those websites are not part of the materials for this IBM product, and use of those websites is at your own risk.

IBM may use or distribute any of the information you supply in any way it believes appropriate without incurring any obligation to you.



---

## Trademarks

IBM, the IBM logo, and [ibm.com](http://www.ibm.com) are trademarks of International Business Machines Corp., registered in many jurisdictions worldwide. Other product and service names might be trademarks of IBM or other companies. A current list of IBM trademarks is available on the web at "Copyright and trademark information" at <http://www.ibm.com/legal/copytrade.shtml>

Adobe and PostScript are either registered trademarks or trademarks of Adobe Systems Incorporated in the United States and/or other countries.

Cell Broadband Engine is a trademark of Sony Computer Entertainment, Inc., in the United States, other countries, or both and is used under license therefrom.

Intel, Intel Xeon, Itanium, and Pentium are trademarks or registered trademarks of Intel Corporation or its subsidiaries in the United States and other countries.

Java and all Java-based trademarks and logos are trademarks or registered trademarks of Oracle and/or its affiliates.

Linux is a registered trademark of Linus Torvalds in the United States, other countries, or both.

Microsoft, Windows, and Windows NT are trademarks of Microsoft Corporation in the United States, other countries, or both.

UNIX is a registered trademark of The Open Group in the United States and other countries.

Mellanox®, ConnectX®, CORE-Direct® and Virtual Protocol Interconnect® are registered trademarks of Mellanox Technologies, Ltd.

---

## Important notes

When referring to hard disk drive capacity or communications volume, MB stands for 1 000 000 bytes, and GB stands for 1 000 000 000 bytes. Total user-accessible capacity can vary depending on operating environments.

IBM makes no representation or warranties regarding non-IBM products and services that are ServerProven<sup>®</sup>, including but not limited to the implied warranties of merchantability and fitness for a particular purpose. These products are offered and warranted solely by third parties.

IBM makes no representations or warranties with respect to non-IBM products. Support (if any) for the non-IBM products is provided by the third party, not IBM.

Some software might differ from its retail version (if available) and might not include user manuals or all program functionality.

This product is not intended to be connected directly or indirectly by any means whatsoever to interfaces of public telecommunications networks, nor is it intended to be used in a public services network.

---

## Document format

The publications for this product are in Adobe Portable Document Format (PDF) and should be compliant with accessibility standards. If you experience difficulties when you use the PDF files and want to request a web-based format or accessible PDF document for a publication, direct your mail to the following address:

*Information Development  
IBM Corporation  
205/A015  
3039 E. Cornwallis Road  
P.O. Box 12195  
Research Triangle Park, North Carolina 27709-2195  
U.S.A.*

In the request, be sure to include the publication part number and title.

When you send information to IBM, you grant IBM a nonexclusive right to use or distribute the information in any way it believes appropriate without incurring any obligation to you.

---

## Electronic emission notices

### **Federal Communications Commission (FCC) statement**

**Note:** This equipment has been tested and found to comply with the limits for a Class A digital device, pursuant to Part 15 of the FCC Rules. These limits are designed to provide reasonable protection against harmful interference when the equipment is operated in a commercial environment. This equipment generates, uses, and can radiate radio frequency energy and, if not installed and used in accordance with the instruction manual, may cause harmful interference to radio communications. Operation of this equipment in a residential area is likely to cause harmful interference, in which case the user will be required to correct the interference at his own expense.

Properly shielded and grounded cables and connectors must be used in order to meet FCC emission limits. IBM is not responsible for any radio or television interference caused by using other than recommended cables and connectors or by unauthorized changes or modifications to this equipment. Unauthorized changes or modifications could void the user's authority to operate the equipment.

This device complies with Part 15 of the FCC Rules. Operation is subject to the following two conditions: (1) this device may not cause harmful interference, and (2) this device must accept any interference received, including interference that may cause undesired operation.

### **Industry Canada Class A emission compliance statement**

This Class A digital apparatus complies with Canadian ICES-003.

### **Avis de conformité à la réglementation d'Industrie Canada**

Cet appareil numérique de la classe A est conforme à la norme NMB-003 du Canada.

## **Australia and New Zealand Class A statement**

**Attention:** This is a Class A product. In a domestic environment this product may cause radio interference in which case the user may be required to take adequate measures.

## **European Union EMC Directive conformance statement**

This product is in conformity with the protection requirements of EU Council Directive 2004/108/EC on the approximation of the laws of the Member States relating to electromagnetic compatibility. IBM cannot accept responsibility for any failure to satisfy the protection requirements resulting from a nonrecommended modification of the product, including the fitting of non-IBM option cards.

**Attention:** This is an EN 55022 Class A product. In a domestic environment this product may cause radio interference in which case the user may be required to take adequate measures.

Responsible manufacturer:  
International Business Machines Corp.  
New Orchard Road  
Armonk, New York 10504  
914-499-1900

European Community contact:  
IBM Technical Regulations, Department M456  
IBM-Allee 1, 71137 Ehningen, Germany  
Telephone: +49 7032 15-2937  
E-mail: tjahn@de.ibm.com

## **Germany Class A statement**

**Deutschsprachiger EU Hinweis:**

### **Hinweis für Geräte der Klasse A EU-Richtlinie zur Elektromagnetischen Verträglichkeit**

Dieses Produkt entspricht den Schutzanforderungen der EU-Richtlinie 2004/108/EG zur Angleichung der Rechtsvorschriften über die elektromagnetische Verträglichkeit in den EU-Mitgliedsstaaten und hält die Grenzwerte der EN 55022 Klasse A ein.

Um dieses sicherzustellen, sind die Geräte wie in den Handbüchern beschrieben zu installieren und zu betreiben. Des Weiteren dürfen auch nur von der IBM empfohlene Kabel angeschlossen werden. IBM übernimmt keine Verantwortung für die Einhaltung der Schutzanforderungen, wenn das Produkt ohne Zustimmung der IBM verändert bzw. wenn Erweiterungskomponenten von Fremdherstellern ohne Empfehlung der IBM gesteckt/eingebaut werden.

EN 55022 Klasse A Geräte müssen mit folgendem Warnhinweis versehen werden:  
"Warnung: Dieses ist eine Einrichtung der Klasse A. Diese Einrichtung kann im Wohnbereich Funk-Störungen verursachen; in diesem Fall kann vom Betreiber verlangt werden, angemessene Maßnahmen zu ergreifen und dafür aufzukommen."

## **Deutschland: Einhaltung des Gesetzes über die elektromagnetische Verträglichkeit von Geräten**

Dieses Produkt entspricht dem "Gesetz über die elektromagnetische Verträglichkeit von Geräten (EMVG)". Dies ist die Umsetzung der EU-Richtlinie 2004/108/EG in der Bundesrepublik Deutschland.

## **Zulassungsbescheinigung laut dem Deutschen Gesetz über die elektromagnetische Verträglichkeit von Geräten (EMVG) (bzw. der EMC EG Richtlinie 2004/108/EG) für Geräte der Klasse A**

Dieses Gerät ist berechtigt, in Übereinstimmung mit dem Deutschen EMVG das EG-Konformitätszeichen - CE - zu führen.

Verantwortlich für die Einhaltung der EMV Vorschriften ist der Hersteller:

International Business Machines Corp.  
New Orchard Road  
Armonk, New York 10504  
914-499-1900

Der verantwortliche Ansprechpartner des Herstellers in der EU ist:

IBM Deutschland  
Technical Regulations, Department M456  
IBM-Allee 1, 71137 Ehningen, Germany  
Telephone: +49 7032 15-2937  
E-mail: tjahn@de.ibm.com

### **Generelle Informationen:**

Das Gerät erfüllt die Schutzanforderungen nach EN 55024 und EN 55022 Klasse A.

## **Japan VCCI Class A statement**

この装置は、クラス A 情報技術装置です。この装置を家庭環境で使用すると電波妨害を引き起こすことがあります。この場合には使用者が適切な対策を講ずるよう要求されることがあります。 VCCI-A

This is a Class A product based on the standard of the Voluntary Control Council for Interference (VCCI). If this equipment is used in a domestic environment, radio interference may occur, in which case the user may be required to take corrective actions.

## Korea Communications Commission (KCC) statement

이 기기는 업무용(A급)으로 전자파적합기기로서 판매자 또는 사용자는 이 점을 주의하시기 바라며, 가정외의 지역에서 사용하는 것을 목적으로 합니다.

This is electromagnetic wave compatibility equipment for business (Type A). Sellers and users need to pay attention to it. This is for any areas other than home.

## Russia Electromagnetic Interference (EMI) Class A statement

ВНИМАНИЕ! Настоящее изделие относится к классу А. В жилых помещениях оно может создавать радиопомехи, для снижения которых необходимы дополнительные меры

## People's Republic of China Class A electronic emission statement

中华人民共和国“A类”警告声明

声明

此为A级产品，在生活环境中，该产品可能会造成无线电干扰。在这种情况下，可能需要用户对其干扰采取切实可行的措施。

## Taiwan Class A compliance statement

警告使用者：  
這是甲類的資訊產品，在居住的環境中使用時，可能會造成射頻干擾，在這種情況下，使用者會被要求採取某些適當的對策。









Printed in USA

(1P) P/N: 88Y7933

